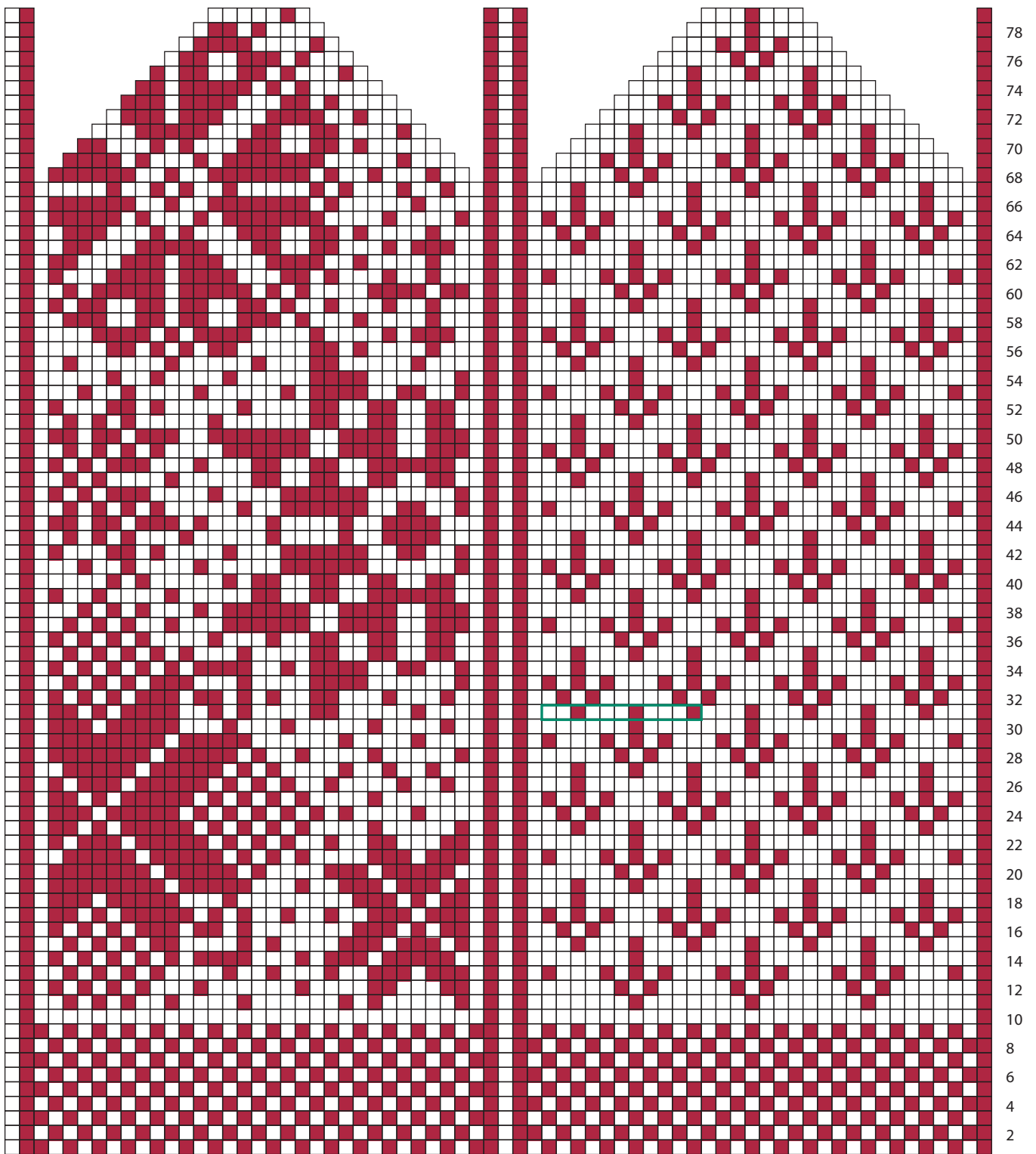
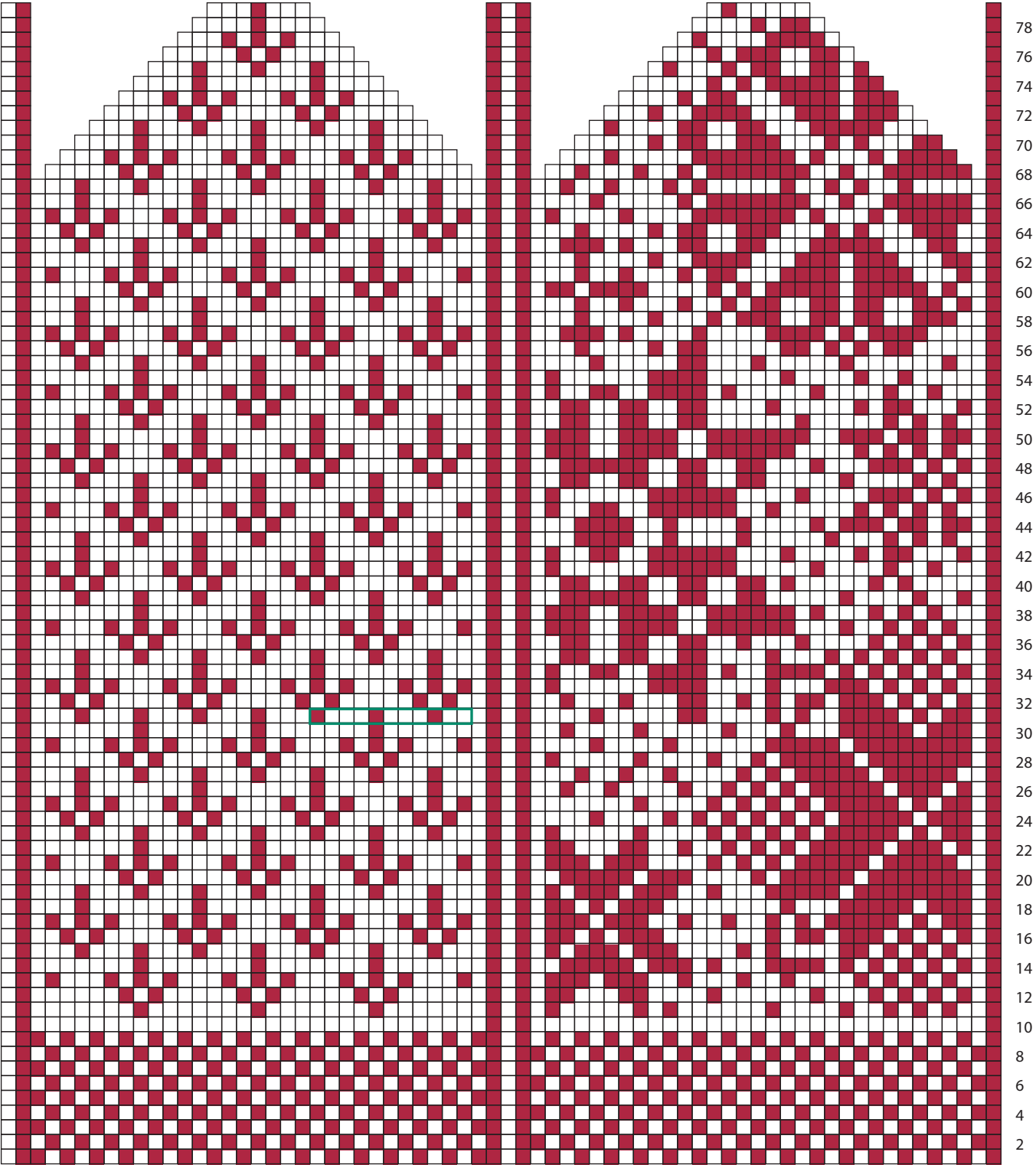


Size Medium (left)



Size	Approximately 8 ¾" palm circumference by 9 ¼"
Yarn	St-Denis Nordique (100% wool; 150 yd [137 m]/50 g): 1 ball each MC and CC
Needles	Set of 5 double-pointed needles (dpn) in Size US 8 (5 mm) OR SIZE NEEDED TO OBTAIN GAUGE
Notions	Stitch markers
Gauge	16 sts and 18 rnds = 2" (5 cm) in stranded colour St st

Size Medium (right)



Thumb Placement